

## **VAMOUSSE LICE TREATMENT- sodium chloride aerosol, foam**

**Tyra Tech, Inc.**

*Disclaimer: This homeopathic product has not been evaluated by the Food and Drug Administration for safety or efficacy. FDA is not aware of scientific evidence to support homeopathy as effective.*

-----

### **Vamousse™ Lice Treatment**

#### **Drug Facts**

##### **Active Ingredient**

Natrium muriaticum 2X (HPUS)

##### **Purpose**

Homeopathic pediculicide

##### **Uses**

Treats head lice

##### **Warnings**

**For external use only**

##### **Do Not Use**

- near eyes
- inside nose
- mouth
- vagina
- eyebrows or eyelashes.

See a doctor if lice are present in these areas.

##### **When using this product**

- Keep eyes tightly closed and protect eyes with a washcloth or towel.
- If product gets in eyes, flush with water right away.
- Scalp itching or redness may occur.
- Do not puncture or incinerate; contents under pressure.
- Do not smoke or use near open flame or heated surface.
- Do not store at temperature above 120° (49°C).

**Stop use and ask a doctor** if eye irritation occurs, skin or scalp irritation continues or infection occurs.

If pregnant or breastfeeding, ask a health professional before use.

**Keep out of reach of children.** If swallowed, get medical help or contact a Poison Control Center right away.

##### **Directions**

**Important: Read Warnings before use. Read ALL instructions on pamphlet inside box. Adults**

**and children 2 years and older:**

**Treating lice and eggs (nits):**

- Start with DRY hair.
- Separate hair into 3 – 4 sections.
- Shake can well before using.
- Part hair in 1 inch sections, apply mousse directly to scalp. Pay special attention to nape of neck and behind ears.
- **Thoroughly saturate all hair and scalp. To be effective, all lice and nits must come in contact with the product.**
- After hair is saturated, allow product to remain on hair for 15 minutes.

**To remove lice and their eggs (nits):**

- Use enclosed lice/nit comb, combing hair from as close to scalp as possible to the end of hair.
- If hair dries during combing, apply more product.
- After combing, thoroughly recheck for lice/nits. Repeat combing if necessary.
- Shampoo and towel dry hair.

**Product may be used as often as needed. Children under 2 years old:** ask a doctor.

**Other Information**

Store between 59-86°F (15-30°C). See package insert for additional information.

**Inactive Ingredients**

Ammonium benzoate, Benzyl alcohol, Butyl lactate, Cocamidopropyl betaine, Fragrance, Isopropyl alcohol, Isopropyl myristate, Magnesium lauryl sulfate, Propellant A-46, Triethyl citrate, Water

**Questions?**

1.855.373.7210 or [www.VamousseLice.com](http://www.VamousseLice.com)

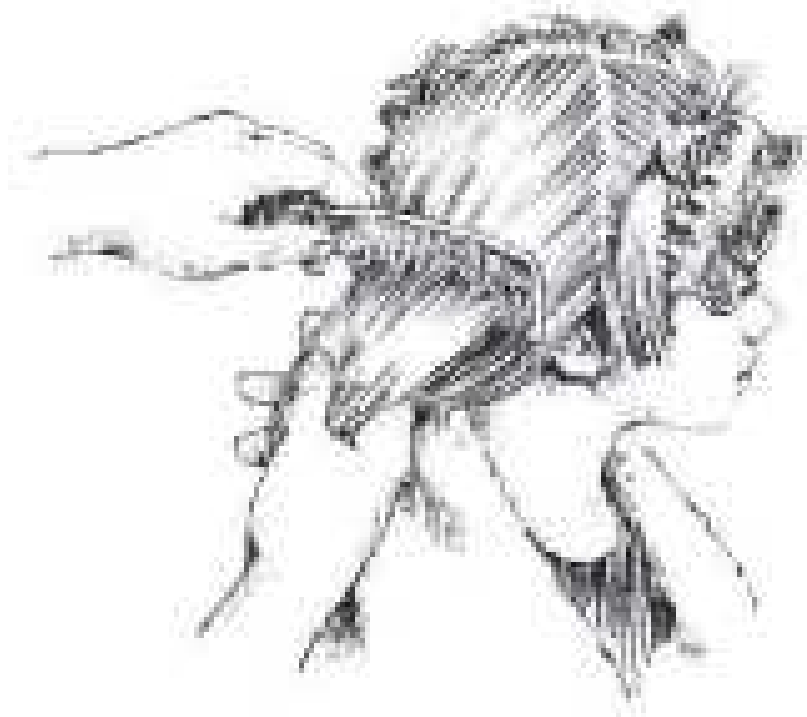
**LICE & EGG TREATMENT INSTRUCTION SHEET**

**Please read and follow instructions carefully before using product.**

**1 COLLECT THESE SUPPLIES**

- Vamousse Lice Treatment
- Vamousse lice comb (*included in package*)
- 2 clean towels (*white is preferred so lice can be easily seen*)
- Paper towels or facial tissues
- 4 hair clips
- Comb for parting hair
- Shampoo
- Timer or watch

**2 PREPARING FOR VAMOUSSE APPLICATION**



- Wrap a clean towel around shoulders and neck.
- Detangle **DRY** hair with comb or brush.
- Separate hair into 4 equal sections.
- Secure each section of hair with a clip.
- Person being treated should remove contacts or glasses.

### **3 APPLY VAMOUSSE**

*Note: to be effective, ALL lice and nits/eggs MUST come in contact with Vamousse.*



- SHAKE VAMOUSSE WELL IMMEDIATELY BEFORE USE
- Release one section of **DRY** hair from clip.
- Using parting comb, part hair every inch and apply Vamousse directly to scalp.
- Massage Vamousse into hair, working the mousse down to a liquid, from the scalp toward the end of the hair, making sure that all hair and scalp is **completely and thoroughly saturated**.
- After the section is fully saturated, comb hair from the scalp toward the end of the hair to distribute Vamousse.
- Secure the saturated section of hair back in clip.
- **Repeat process until all sections of hair have been treated.**
- **WAIT 15 MINUTES**

**USE ONE CAN OF VAMOUSSE PER INDIVIDUAL BEING TREATED. DEPENDING ON THE LENGTH AND THICKNESS OF HAIR, YOU MAY NEED MORE THAN 1 CAN TO ENSURE COMPLETE SATURATION.**

**4 COMBING IS RECOMMENDED**



**TO FULLY REMOVE ALL DEAD LICE AND NITS, USE THE ENCLOSED VAMOUSSE LICE COMB AND FOLLOW THESE EASY STEPS:**

- Comb hair while scalp and hair are still wet with Vamousse.
- Working section by section, release clip and put a small amount of hair (about 1") in your fingers.
- Place lice comb at scalp, pull comb from the scalp to the ends of the hair.
- Using a clean paper towel or facial tissue, wipe lice, eggs and nits from lice comb.
- Clip back the section of hair you've just combed.
- Repeat until all sections of hair have been combed.

**5 SHAMPOO HAIR**



- Remove clips from hair.
- In a sink or over a bathtub, massage hair thoroughly with shampoo.
- Rinse hair with warm water.
- Pat dry with 2nd clean towel.

**NOTE:** Place used towels or tissues in a plastic bag and discard. Wash hair pins, clips and combs in hot soapy water (above 130°F) for at least 10 minutes.

**WARNINGS:**

- Vamousse is for external use only.
- Avoid contact with eyes. Rinse with warm water if contact occurs.
- Keep out of the reach of children.
- Safe for adults and children 2 years and older.

**TIPS FOR CLEANING THE HOME AND PREVENTING REINFESTATION:**

- Until they have been properly cleaned, do not allow family members to lie on pillows, beds, furniture, carpets or stuffed animals that the infested person has been in contact with.
- Wash all clothing, bedding, towels and any other items the infested person was in contact with before treatment. Set washing machine to hot water cycle (at least 130°F). Dry items in clothes dryer, set on the high heat cycle for at least 20 minutes.
- Dry-clean the items that can't be washed, or place them in a sealed, air-tight plastic bag and store for 2 weeks.

- Vacuum furniture, carpets, rugs, floor, car seats and any other place the infested person sat. Dispose of vacuum filter immediately.
- Soak the infested person's brushes and combs in hot soapy water for at least 10 minutes to disinfect them.

#### **CHECK FAMILY MEMBERS FOR HEAD LICE:**

- Under bright light, check every family member for lice and lice eggs for 10 days. Watch for movement, as lice will quickly travel away from the light.
- Part hair and examine scalp. Eggs and nits are about the size of a poppy seed and are white or yellowish-brown. Eggs are located on the hair shaft, near the scalp. Eggs often look like dandruff, but cannot be easily removed.
- Pay close attention when examining the nape of the neck and behind the ears, but don't neglect the bangs to the crown of the head. Eggs that have recently been laid are nearly transparent, so it's best to examine the hair from different angles, using a lice comb.
- Itching is the most common symptom of lice infestation, but some infested people do not experience itching – so it's important to check all family members, with a lice comb, whether they complain of itching or not.
- Vamousse can be used as often as needed if reinfestation occurs.

#### **HOW ARE HEAD LICE SPREAD, AND WHO GETS HEAD LICE?**

Head lice do not jump or fly; they walk from one hair to another. The most common way head lice spread is through direct head-to-head contact with an infested person. Sometimes they are spread by sharing a comb, brush or clothing with the infested person.

Anyone who comes in contact with head lice can become infested. Infestation is not a result of poor hygiene and can exist on any type of hair. An infestation of head lice is known as *pediculosis capitis*. If your child has head lice, you're not alone. After the common cold, head lice is the second most common communicable disease affecting school-aged children.